



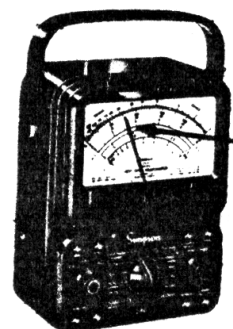
IMPORTANT

INSTALLATION INSTRUCTIONS

T00250

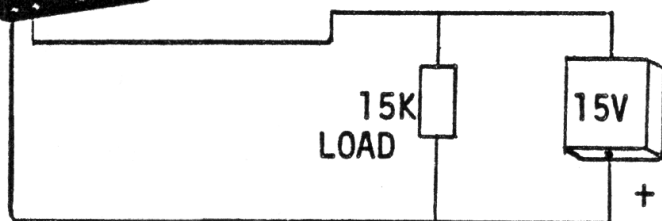
10-861503

05-119529



PREPARATION FOR USE
T00250 10-861503

15V



TESTING THE 15V BATTERY BEFORE INSTALLATION IN THE 260-AFP-1

NOTE: If the voltage of battery B2 drops below 15V, the overload protection circuit will not operate properly. Test the battery as follows:

1. Use an approved battery tester and check to see if the voltage of battery B2 is a minimum of 15 volts.

2. If no approved battery tester is available, use the circuit above showing a 260 and a 15K load connected across the 15V battery. The minimum indication on the 260 should be 15 volts.

TESTING THE OVERLOAD CIRCUIT IN THE 260-AFP-1

1. Insert the good battery into the multimeter and set the range switch to the Rx10,000 position.
2. Set the function switch to the -DC position.
3. With the black test lead plugged into the common (negative) input jack, touch the other end of the black lead to the 50uA input jack.
4. The reset button should pop out indicating that the internal battery is good.
5. No damage will occur as a result of this test.
6. If the reset button does not pop out and the 15V battery checks good, then the overload module is defective.